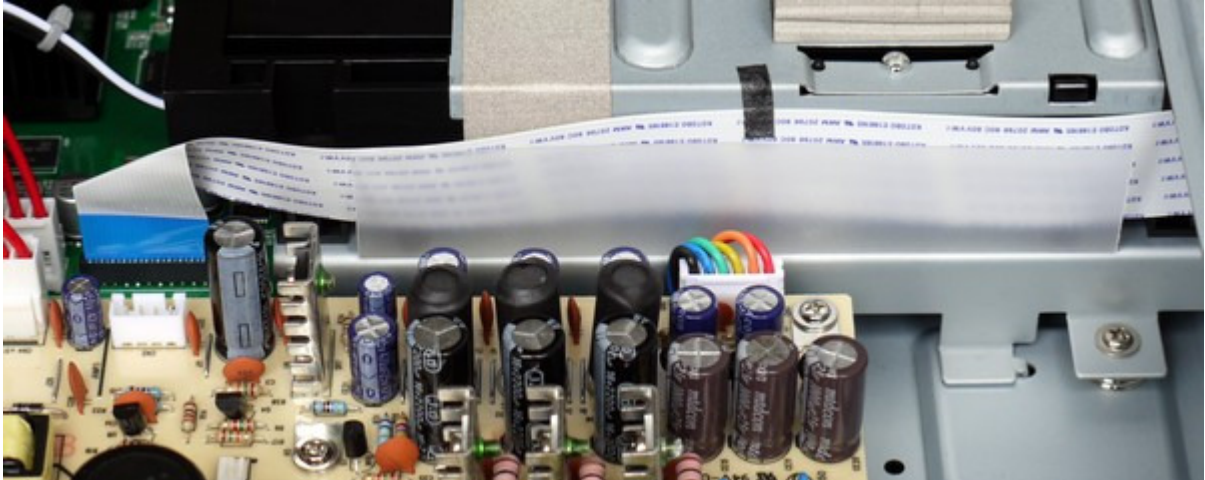


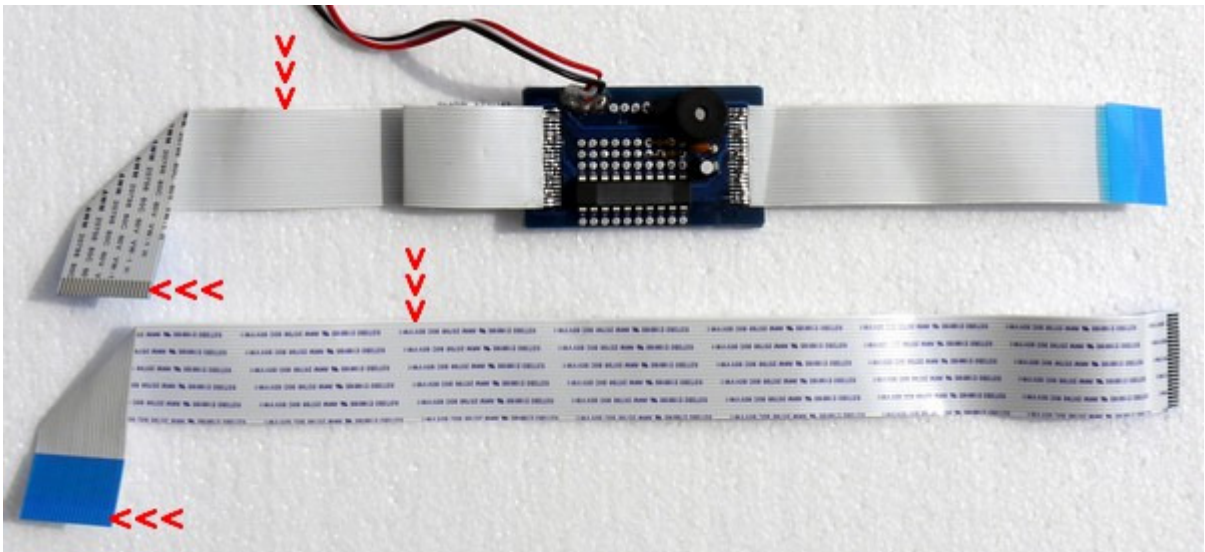
WARNING: ELECTROSTATIC SENSATIVE DEVISE. TAKE PROPER PRECUAUTIONS

Installation Instructions:

1. Disconnect the mains cable. Remove the player's top cover retaining screws, and then lift the rear of the top cover through 45° while carefully pulling it free from the front panel.
2. Remove the flat ribbon cable running from the front panel to the main board. (Pull out by hand; cable is a snug friction fit).

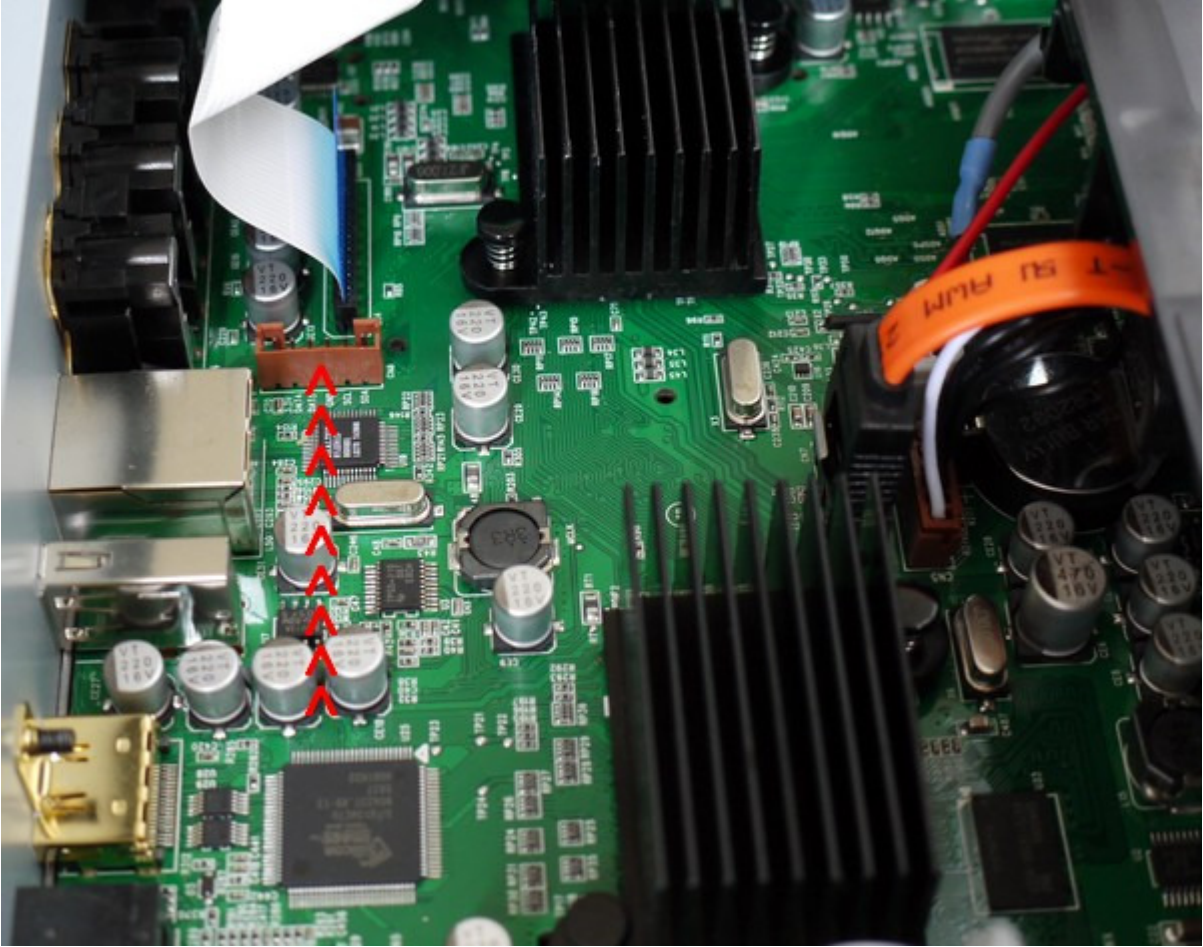


3. Fold the new cable as shown below. **Important Note:** The original cable is fitted with the writing facing away from the disc drive. The replacement cable is the other way round. The important thing is that pin 1 (top) goes to the front of the main board connector (Front of player). See >>>



4. First: Connect the short end of the ribbon cable to front panel.
5. Second: Connect the longer end to the main board (Ensure the cable is flat when pushing it into the sockets and that it is fully inserted). Peel off the backing and attach the board to the disc drive with the adhesive pad.

6. Third: Connect the 3 pin cable to the brown 6 pin plug at the rear of the main board. **Important Note**: The plug will only fit one way round and the 3 wires are to the front of the player.



7. Installation is now complete. Replace the player's top cover and tighten the screws with the player on a flat surface to ensure the chassis is not twisted.



Operation:

1. After installing the board, you will hear a beep when you first reconnect the mains cable.
2. Your BDP-83 should be region free for DVD and zone A for Blu-ray.

3. **Note:** Remember to go to *Video Setup > TV System* and set the TV system to *Multi-system* to enable 60Hz NTSC and 50Hz PAL output.
4. **Important Note:** Region & Zone changes should be made with the player in standby.
5. To switch to a different zone for Blu-ray, press and hold the remotes blue button for around 5 seconds until you hear beeps, press 2 for zone B (you will hear 2 beeps), or press 3 for zone C (you will hear 3 beeps), or to revert to zone A press 1 (you will hear 1 beep).
6. To switch to a specific region for DVD (other than region free), press and hold the remotes red button for around 5 seconds until you hear beeps, press 2 for region 2 (you will hear 2 beeps), press 3 for region 3 (you will hear 3 beeps) etc. To switch back to region free, press 0 (you will hear a long beep)